



Please have music or music video playing as people gather



**Ask participants to sit with their PLT.**

**Welcome and provide time for “greeting” activity as follows: (7 minutes)**

- Ask participants to take a moment to greet participants in the room in the Peace of Jesus Christ.



## Mission Prayer

*God, where will your spirit lead today?  
Help me be fully awake and ready to respond.  
Grant me courage to risk something new  
And become a blessing of your love and peace.  
Amen.*

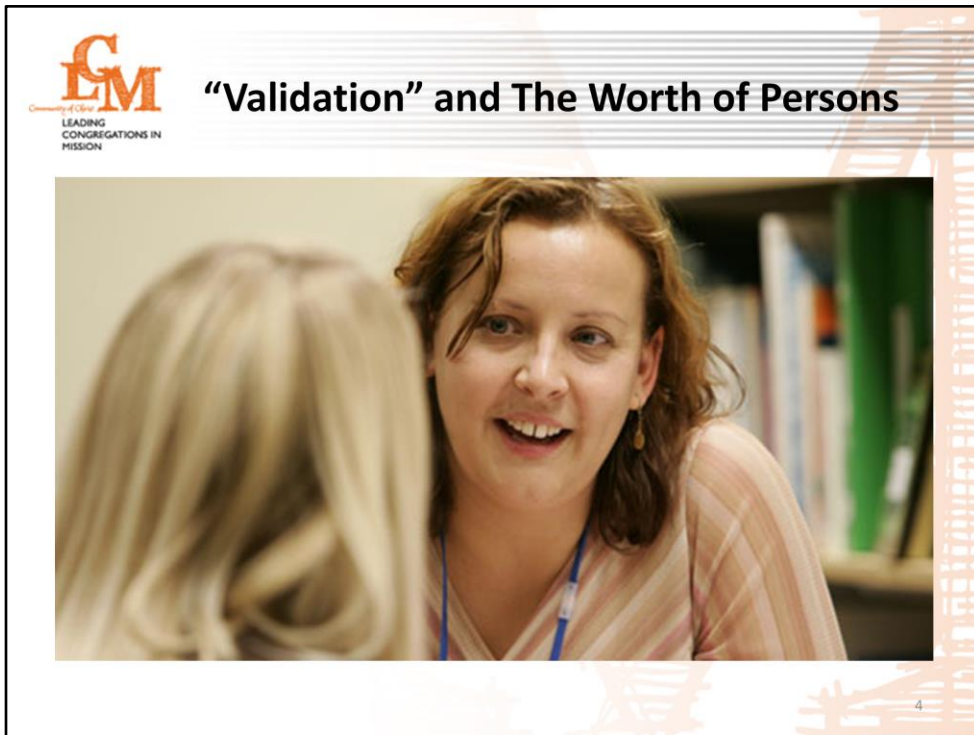
**Gather back participants to their tables and ask for a person at each table to read out loud the *Mission Prayer* as a centering moment. (3 minutes)**

### **Mission Prayer**

God, where will your spirit lead today?  
Help me be fully awake and ready to respond.  
Grant me courage to risk something new  
And become a blessing of your love and peace.  
Amen.

**Share the following statement:**

May we be fully awake and ready to respond to God's emerging vision this weekend.



**Share the following scripture from Doctrine and Covenants 161: 4a,b:**

*Do not neglect the smallest among you, for even the least of these are treasures in God's sight. Receive the giftedness and energy of children and youth, listening to understand their questions and their wisdom. Respond to their need to be loved and nurtured as they grow.*

*Be mindful of the changing of life's seasons, of the passage from the springtime of childhood and youth to the winter years of life. Embrace the blessing of your many differences. Be tender and caring. Be reminded once again that the gifts of all are necessary in order that divine purposes may be accomplished.*

**Show "Validation" video (14 minutes):**

**Make following statement after video:**

*We all need validation. Why? Because it is important for us to know that we matter to one another in community. In Community of Christ the Worth of Persons is one of our most foundational enduring principles and informs everything we do. Affirming one another in one of the ways we embody the Worth of Persons. .*



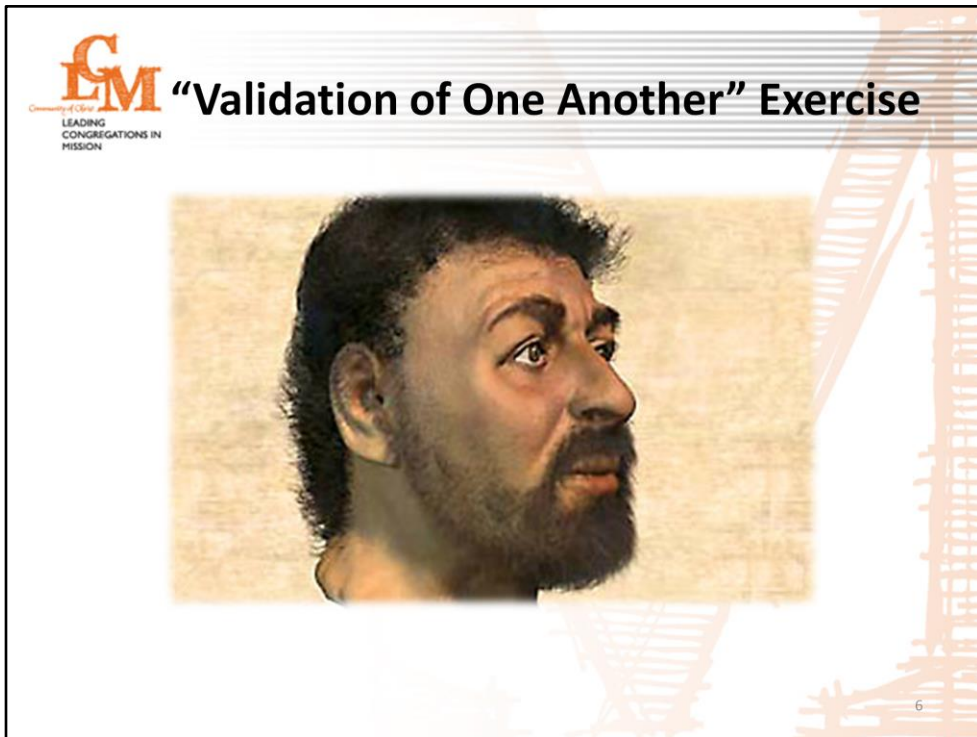
## Table Talk

1. How did Hugh's validation make others feel? Which example spoke to you?
2. What caused Hugh to stop validating others?
3. When was the last time you were validated?



**Provide Table Discussion:** Ask each table to discuss the following questions related to the “Validation” video (10 minutes):

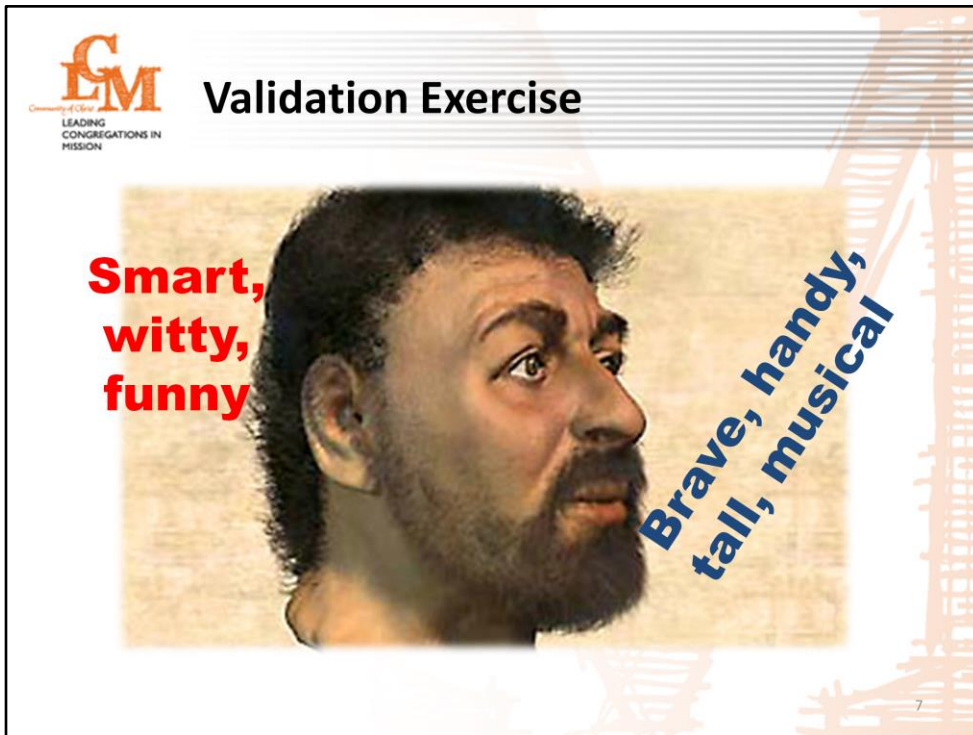
- How did Hugh's validation make others feel? Which example spoke to you?
- What caused Hugh to stop validating others?
- When the last time you felt your worth as a person was truly validated?



**Facilitate Step 4 in the “Validation Exercise:” (20 minutes) This and next slide.**

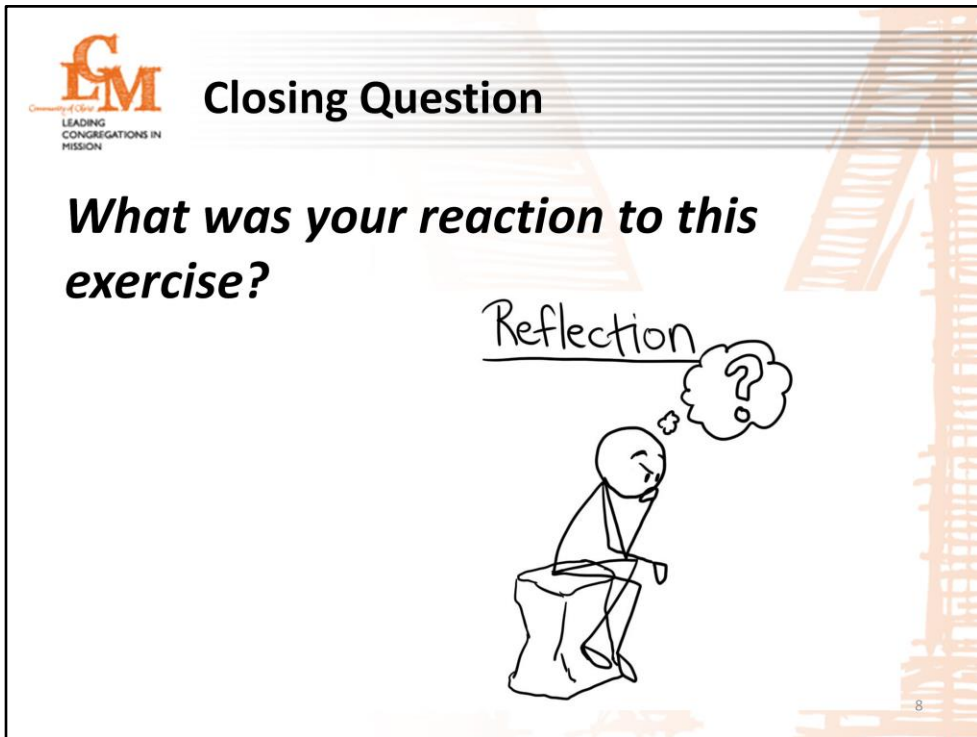
**Ask the group if they know who this is a picture of.**

**State this is a forensic model of what a typical man in Jesus time would look like.**



Refer participants to “Validating One Another – A Missional Exercise” in the Tool Tab located on pages 98-100 and form pairs to facilitate the remainder of Step Four as follows:

- Have each person write the name of their partner on the bottom of the diagram and provide each person with 2 minutes to reflect on all the gifts and talents they have come to appreciate.
- Provide 3 minutes for each one to write on the body and head areas of the diagram the gifts and talents they have observed (authentic ones) in the person they are partnered with.
- Have each one share the gifts and talents listed for each other and then express their genuine appreciation (i.e. validate) for the person. (5 minutes)
- See next slide - Share in a brief conversation around this question: *What was your reaction to this exercise?* (5 minutes)



**Provide table discussion for this question (5 minutes):**

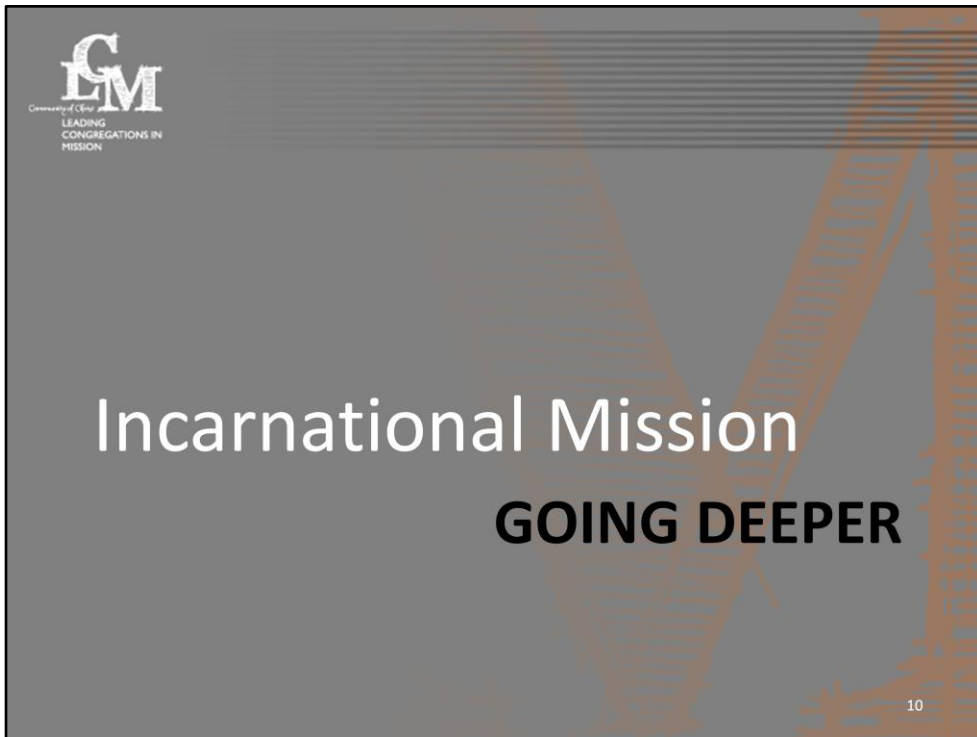
***What was your reaction to this exercise?***

And have the big group share.

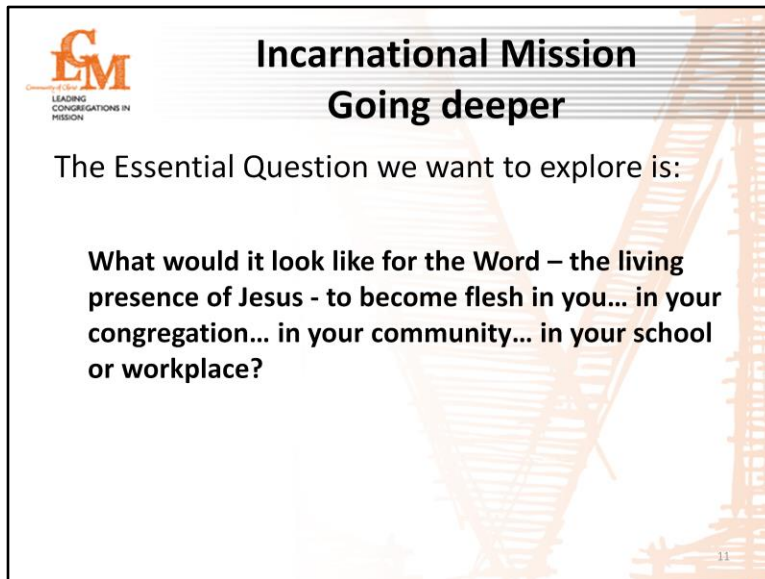
What are opportunities in your congregation to use the “Validating – Missional Exercise?” What are other ways you can help your congregation be more intentional in *speaking well of one another*?

## Break Time - Be back at 9:30am





**Welcome and encourage participants to sit with any table of their choosing.**



Share the following points (slides 11 – 14). Include time for responses to questions on slide 14: (10 Minutes)

The Essential Question we want to explore is:

**What would it look like for the Word – the living presence of Jesus - to become flesh in you... in your congregation... in your community... in your school or workplace?**

As we consider this essential question we in LCM remember:

- We share a vision for creation – “The vision we share is God’s vision of reconciliation, salvation, wholeness, justice, and peace expressed in the scriptural definition of *shalom*. Shalom means a fullness or completeness of peace. God yearns to establish a lasting covenant of peace with humankind and with all of creation.” *From Sharing in Community of Christ Version 3*
- This vision calls us to creatively, courageously and compassionately go deeper in our understanding of the relational nature of God.
- We must be willing to continuously, creatively, courageously and compassionately risk new relationships of invitation, hospitality and healing.
- Our entry points for discovering and living Christ’s mission are found in new and deeper relationships. **(Note to facilitator: This is an important point and may deserve elaboration or large group discussion.)**
- When we take on the life and mind of Christ we begin to see each other in new ways.

## “Incarnation” Scripture Texts

- *He is the image of the invisible God...* – Colossians 1: 15 NRSV
- *We look at this Son and see the God who cannot be seen.* – Colossians 1: 15 (The Message)

Read these contrasting images in the following scriptures:

*He is the image of the invisible God...* – Colossians 1: 15 NRSV

*We look at this Son and see the God who cannot be seen.* – Colossians 1: 15 (The Message)



## Incarnation

“... Jesus offers us, here and now, His own sonship; His own spirit; His own mission to the world. **The love which He incarnated, by which we are saved, is to become the love which fills us beyond capacity and flows out to heal the world: so that the Word may become flesh once more, and dwell (not just among us, but) within us... we must then reveal His glory, glory as of the beloved children of the Father, full of grace and truth**”

– N.T. Wright, Following Jesus (Bold added)

Quote N. Thomas Wright:

“Because of the cross, Jesus offers us, here and now, His own sonship; His own spirit; His own mission to the world. **The love which He incarnated, by which we are saved, is to become the love which fills us beyond capacity and flows out to heal the world: so that the Word may become flesh once more, and dwell (not just among us, but) within us;** having beheld His glory, we must then reveal His glory, glory as of the beloved children of the Father, full of grace and truth” – N.T. Wright, Following Jesus (Bold added)

## **Make Visible the Incarnation of God's Love**

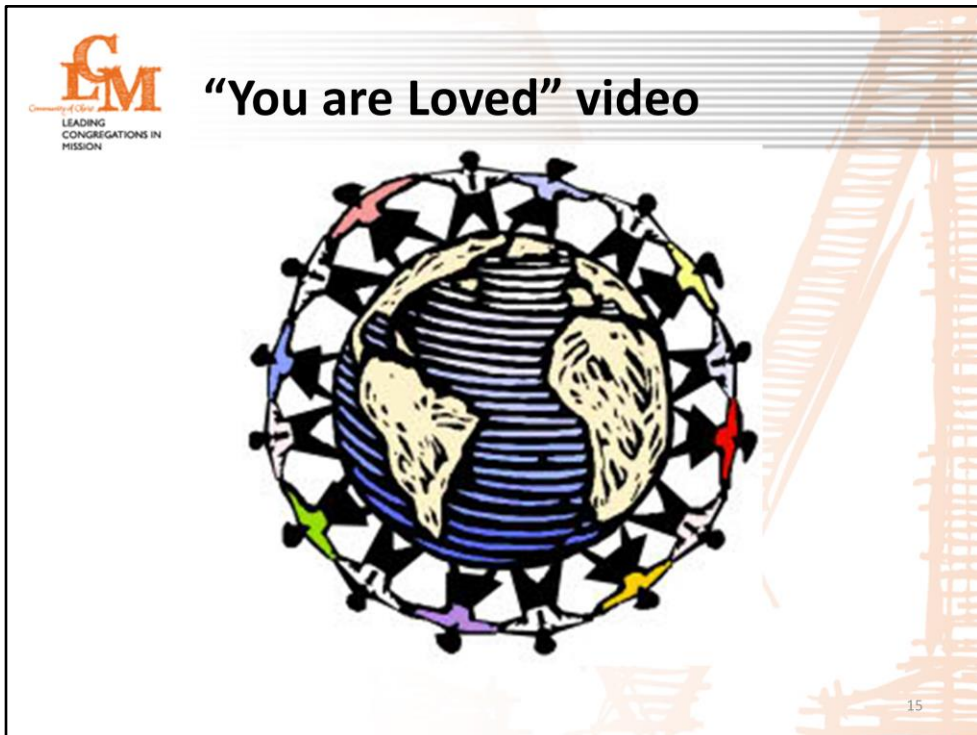
- How do you see yourself, as a leader of mission, beginning to make visible the incarnation of God's love (embodying his concerns and passion of Christ)?
- How do you see your congregation, beginning to make visible the incarnation of God's love (embodying his concerns and passion of Christ)?

14

Invite a few persons, in the large group, to offer from their experience brief responses to this question (save at least 5 minutes for this):

**How do you see yourself, as a leader of mission, beginning to make visible the incarnation of God's love (embodying his concerns and passion of Christ)?**

**How do you see your congregation, beginning to make visible the incarnation of God's love (embodying his concerns and passion of Christ)?**



**Refer to “You are Loved by Nelda Kerr” in Handout Tab pages 87-89.** Please give special acknowledgement to Nelda Kerr, a member of Community of Christ. Her poem inspired the video “You Are Loved.”

**Introduce and show video and facilitate table discussion:** (50 Minutes)

Show the “You Are Loved” video (5 Minutes)

## Table Discussion

What in the video led you to consider new or deeper understandings of incarnational mission?



16

Facilitate table discussion for responses to this question: (10 minutes of 50):

What in the video led you to consider new or deeper understandings of incarnational mission?

## **“You Are Loved” – Another Look**



17

Show a 2<sup>nd</sup> time the “You Are Loved” video: (5 Minutes of 50)

Please refer people to the Handout section pages 89-91 to read along with Nelda’s poem if they want.



## Incarnational Mission

- How is your increasing understanding of incarnational mission beginning to radically change what it looks like to be a disciple (and the church) on a daily basis? Be specific!
- How would things look different than they do today (in your life, in your congregation)?

18

Facilitate table discussions around this set of questions: (20 Minutes of 50)

**How is your increasing understanding of incarnational mission beginning to radically change what it looks like to be a disciple (and the church) on a daily basis? Be specific!**

**How would things look different than they do today (in your life, in your congregation)?**

Ask each table to share one opportunity or comment from their table.



## Risking New Relationships

Unless we are willing to risk new relationships with God and others in everyday life with an everyday God to live into the understanding that the Kingdom of God has come near every single day, we will continue to miss opportunities to embody the concerns and passion of Christ!

19

Read and facilitate table discussion on this provocative statement: (10 Minutes of 50)

***Unless we are willing to risk new relationships with God and others in everyday life with an everyday God to live into the understanding that the Kingdom of God has come near every single day we will continue to miss opportunities to embody the concerns and passion of Christ!***

***How does this statement call us into mission?***



## Break Time be back at 11:15am





# What is Prophetic Imagination?



21

**Encourage participants to sit with any table of their choosing.**

**Welcome and acknowledge this session is designed, in a spirit of worship, to give us just an initial glimpse of seeing the world with new eyes.**

**Note: 15 minutes for slides 21-23.**

**Note to facilitator:** In the welcoming statement inform the participants that this session will be presented in the 'spirit' of "missional worship." Remember, missional worship is centered in Christ, grounded in scripture, and leads us into deeper relationships with God and one another. When our worship helps us to become vulnerable to God and one another we see glimpses of God's "vision of reconciliation, salvation, wholeness, justice, and peace". This is both affirming of God's love and disruptive to our status quo. May we together be renewed in the encounter of God's love and disrupted by a vision of what could be.

## What is Prophetic Imagination?

*How is God calling us to see beyond  
the reality of the present and envision  
an alternative future – God's future?*



22

**The Essential Question we want to explore is:**

How is God calling us **to see** beyond the reality of the present and envision an alternative future – God's future?

**GM**  
Community of Grace  
LEADING  
CONGREGATIONS IN  
MISSION

## “Behold a Broken World We Pray”

Between verses offer this prayer:

***Lord hear our prayer  
that we may see what  
You would have us see.***



23

**Refer participants to “Behold a Broken World We Pray” in Handout Tab on page 75**

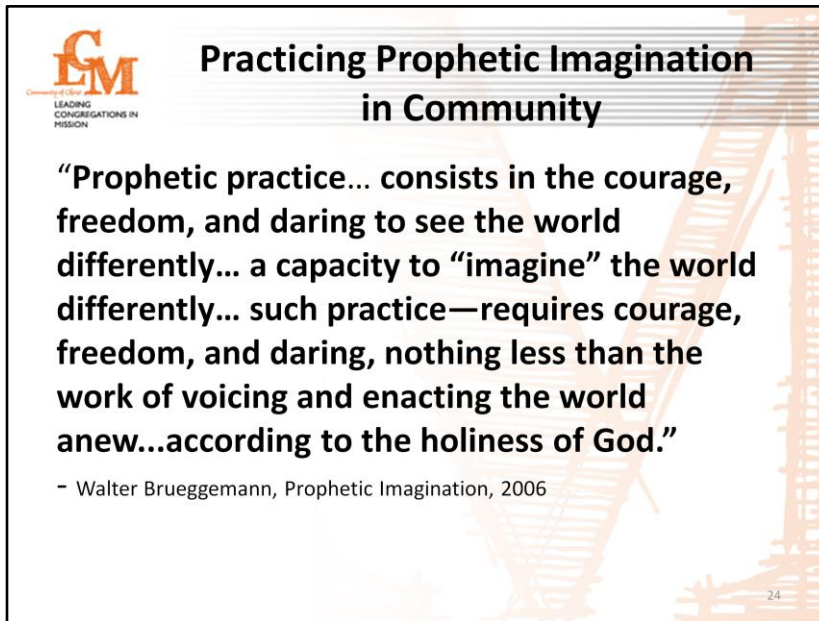
and invite participants to sing (or read) (Sing for Peace) one stanza at a time. Note: It is important to provide one minute of silent reflection after each verse. Ask participants to allow ourselves to be confronted by the images emerging from the text between each verse by use of this guided prayer:

***Lord hear our prayer that we may see what You would have us see.***

***Behold a Broken World We Pray*** - From Sing for Peace

- 1 Behold a broken world, we pray, where want and war increase, and grant us, Lord, in this our day, the ancient dream of peace:*
- 2 A dream of swords to sickles bent, of spears to scythe and spade, the weapons of our warfare spent, a world of peace remade;*
- 3 Where every battle flag is furled and every trumpet stilled, where wars shall cease in all the world, a waking dream fulfilled.*
- 4 No force of arms shall there prevail nor justice cease its sway; nor shall their loftiest visions fail the dreamers of the day.*
- 5 O Prince of peace, who died to save, a lost world to redeem, and rose in triumph from the grave, behold our waking dream.*
- 6 Bring, Lord, your better world to birth, your kingdom, love's domain; where peace with God, and peace on earth, and peace eternal reign.*

Tune: Martydom CM, Words by: Timothy Dudley-Smith



Refer participants to the article "Practicing Prophetic Imagination in Community" in the Handout Tab on pages 76-79.

Introduce and facilitate the following in three "parts" from "Practicing Prophetic Imagination in Community" (Note to facilitator: Following each quote is a suggested way to process the quotes.):

**Note: 20 Minutes for slides 24-30.**

**Part 1. Prophetic Practice:** *"Prophetic practice, as evidenced in the Old Testament, consists in the courage, freedom, and daring to see the world differently... a capacity to 'imagine' the world differently... As in the ancient world, so now in our contemporary world, such practice--rooted in old texts and memories—requires courage, freedom, and daring, nothing less than the work of voicing and enacting the world anew...according to the holiness of God.*

- Provide time for meditation and strongly encourage participants to 'doodle words or images,' or 'think of words that come to mind' as they reflect on the above statement about "the prophetic practice by stating: "Eliminate clutter and create space for prophetic imagination to emerge."
- Ask for "popcorn" responses (after 2 minutes of mediation) of what words or images they doodled or came to mind and write these on a flip chart or white board.

## Four Steps Toward Prophetic Imagination

1. Give time and space to be awake to God's presence and invitation.
2. Publically challenge situations and relationships not in harmony with God's vision for creation.
3. In relationship with God and one another begin to see God's intended future.
4. Risk co-creating and living into God's future together.

25

### **Part 2. Being Prophetic Consists of Four Steps**

Read the: Being Prophetic Consists of Four Steps

Step 1: Give time and space to be awake to God's presence and invitation.

Step 2: Publically challenge situations and relationships not in harmony with God's vision for creation.

Step 3: In relationship with God and one another to see God's intended future.

Step 4: To risk co-creating and living into God's future together.

Let's take a closer look at each step.



## Step One of Four Steps Toward Prophetic Imagination

1. Give time and space to be awake to God's presence and invitation.

*How do you "give time and space to be awake to God's presence and invitation?"*

26

### **Step 1: Give time and space to be awake to God's presence and invitation.**

- In large group pose this question for responses:

How do some you "give time and space to be awake to God's presence and invitation?" Who would like to share?





## Step Two of Four Steps Toward Prophetic Imagination

2. Publically challenge situations and relationships not in harmony with God's vision for creation.

*With your table group share a time when you “publically challenged a situation or relationship not in harmony with God’s vision for creation or wished that you had.”*

27

### **Step 2: Publically challenge situations and relationships not in harmony with God’s vision for creation.**

- With your table group share a time when you “publically challenged a situation or relationship not in harmony with God’s vision for creation or wished that you had.”



## Step Three of Four Steps Toward Prophetic Imagination

3. In relationship with God and one another begin to see God's intended future.

*Who do you sense God is inviting you to be in relationship with in order for you to see and respond to a situation contrary to God's future?*

28

**Step 3: In relationship with God and one another to see God's intended future.**

- At your table turn to a partner and share in pairs your response to this question:

Who do you sense God is inviting you to be in relationship with in order for you to see and respond to a situation contrary to God's future?





## Step Four of Four Steps Toward Prophetic Imagination

4. Risk co-creating and living into God's future together.

*What fears or challenges must you let go of to move into God's future together?*

29

**Step 4: To risk co-creating and living into God's future together.**

- With your table group share your responses to this question:

What fears or challenges must you let go of to move into God's future together?



## Our Calling as Community of Christ

We are called to become a people who find God's future more compelling than the current reality.

For Everyone Born . . .



30

**Part 3.** Our Calling: We are called to become a people who find God's future more compelling than the current reality.

- Give participants an opportunity to share their responses as a large group to Part #3 quote:

We are called to become a people who find God's future more compelling than the current reality.



## Dwelling in the Word - Isaiah 58:3-12

### Dwelling in the Word - Isaiah 58:3-12

#### A Missional Practice

*For identifying the prophetic questions,  
which are essential questions,  
that help us to live into God's future.*


31

Refer participants to “Isaiah 58:3-12 Dwelling in the Word” in Handouts Tab on page 82.

**Note:** 25 minutes for slides 31-33.

**Introduce “Isaiah 58:3-12 Dwelling in the Word” with these points:** (2-3 Minutes)

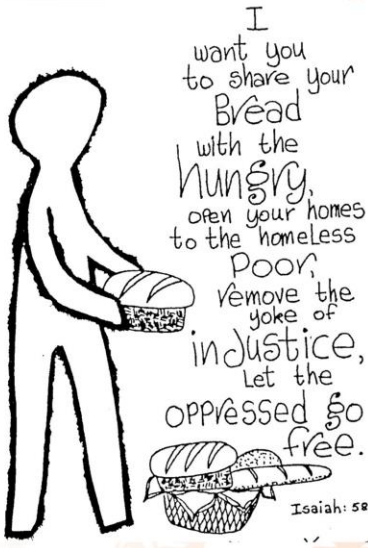
- Developing essential questions is a key to discovering God’s future. Remember we discussed essential questions in retreat 2.
- “Isaiah 58:1-14 Dwelling in the Word” is a helpful practice for identifying the prophetic questions, **which are essential questions**, that help us not only discover but live into God’s future.
- The missional practice “Dwelling in the Word” is not only about learning to listen to each other but allowing the text reads us.
- Reference and point out “Essential Questions” in the **“LCM Overview Brochure.”**



Community of Christ  
LEADING  
CONGREGATIONS IN  
MISSION

## Dwelling in the Word - Isaiah 58:3-12

What are the central prophetic questions from Isaiah 58 for your congregation to explore, as the people of God?



Ask each table to do “Isaiah 58:1-14 Dwelling in the Word” and have them process one basic question: (15 Minutes)

What are the central prophetic questions from Isaiah 58 for your congregation to explore, as the people of God?

Ask the table groups to share with the large group some of the questions they heard in their table discussions (5 minutes). At the end of the sharing make the following statement:

This entire text leads to a very disruptive question – what would it look like for the community to become livable again? This prophetic question has found voice in our day in the words of Doctrine and Covenants 164:9d,e,f:



## What would it look like for the community to become livable again?

*If you truly would be Community of Christ, then embody and live the concerns and passion of Christ. The challenges and opportunities are momentous. Will you remain hesitant in the shadows of your fears, insecurities, and competing loyalties? Or will you move forward in the light of your divinely instilled call and vision? The mission of Jesus Christ is what matters most for the journey ahead.*

- Doctrine and Covenants 164:9d,e,f

33

*Please read this Scripture:*

*d. If you truly would be Community of Christ, then embody and live the concerns and passion of Christ. e. The challenges and opportunities are momentous. Will you remain hesitant in the shadows of your fears, insecurities, and competing loyalties? Or will you move forward in the light of your divinely instilled call and vision? f. The mission of Jesus Christ is what matters most for the journey ahead.*

**Refer** participants to “Isaiah Fast” in Tools Tab on page 101-102 and make this point: This is a tool to tangibly live out the insights from Isaiah 58.

## “Open Your Eyes” Video Reflection



**Show “Open Your Eyes” Video.** (10 Minutes) for this and next slide.



## Prophetic Imagination

- Begins with AWAKENING and SEEING BEYOND the present to a NEW REALITY of hope and possibility.
- Begins with small steps – SEEING CLEARER AND DEEPER IN EVERY MOMENT OF OUR LIVES . . . our relationships with one another and God . . . as windows that reveal glimpses into God’s emerging vision for our world.

35

**Share the following points after viewing the video** (notice it is not planned to have table discussion about the video).

- Prophetic Imagination begins with awakening and seeing beyond the present to a new reality of hope and possibility.
- Prophetic imagination starts with small steps – seeing deeper and clearer in every moment of our lives – our relationships with one another and God – as windows that reveal glimpses into God’s emerging vision for our world.



## Questions and End with Prayer

See Handout Tab:

“Prayer for Spiritual Openness”

by Stephen Veazey



After fielding question, refer participants to “Prayer for Spiritual Openness” by Stephen Veazey in the Handout Tab on pages 83-84 and close with asking someone to read this prayer. Use this prayer as a blessing on lunch.

**Note: 5 minutes for questions and prayer.** The prayer if read (relatively slow) is 2.5 minutes. If time is a factor, consider not reading lines 4, begins with “You are the One...” through to line 13 that ends with “...come in Him.”

Note to facilitators: **This prayer is a modern day prayer that reflects the invitation for us to be open to seeing God’s future.**





Please be sure the Prayer for Peace is printed out for the day and people are in place to do it.

Remind people of the Prayer for Peace start time.



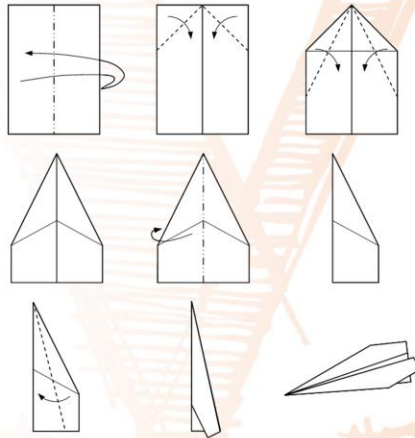
**Encourage participants to sit with any table of their choosing.**

**Two notes to facilitators:**

- Be ready to show video “How to Make the World's Best Distance Paper Airplane.” This video is separate from the retreat video disk. We will supply it on a disk (FYI you can also see it on YouTube <http://www.youtube.com/watch?v=gIETqZmzQ5E> to download.)
- Provide at each table:
- 2 sheets of paper (8 1/2 x 11) per person.
- Markers – a variety of colors (one per person for sharing)

## Seeing Flight, Creating Flight

Have you ever made a paper Airplane?

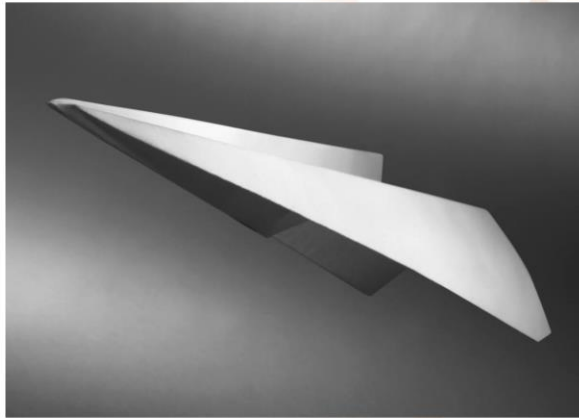


39

Welcome everyone back and introduce session with these comments:

- Explain the object of this session is to have fun by each one creating paper airplanes and flying them for distances. **Note to facilitator: Announce to participants: Do not make your paper airplane yet. Wait! We will show a video for how you can make your paper airplane.**
- Share the history of paper airplanes:
  - Folding paper gliders is a 2500 year old practice from China and Japan.
  - The most significant use of paper models in aircraft designs were by the [Wright brothers](#) (1899 – 1903).
- Here's a fun fact: a sheet of office-quality [photocopier/laser printer](#) paper has approximate in-scale strength of aircraft-grade [aluminum sheet metal](#).
- As a kid... share your fun experience if any with flying paper airplanes.

## “How to Make the World's Best Distance Paper Airplane”



40

**Show video “How to Make the World's Best Distance Paper Airplane” (5:35 minutes) and ask participants follow along and watch how to make a first class, long flying paper airplane. Note: “Markers provided for signing and decorating planes.”**



- Have everyone together as they fly their planes. Note: Do this several times for distance, declare a winner and give a prize.

## Closing Question

***What did you take away from this activity?***



42

Closing Question:

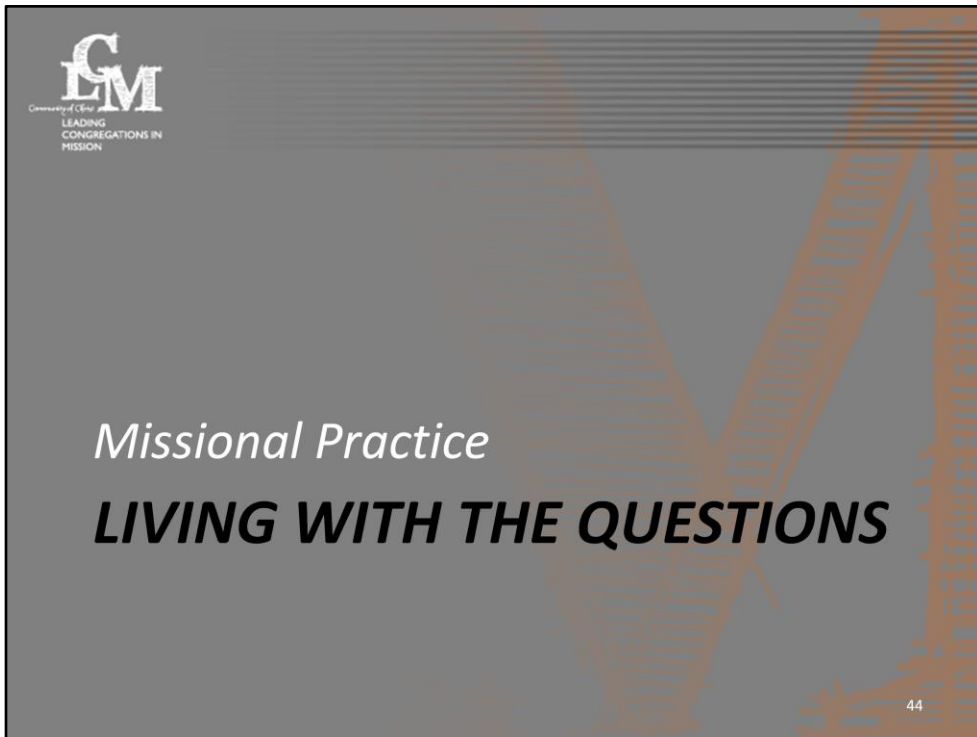
***What did you take away from this activity?***

Have people share their answers in the big group.

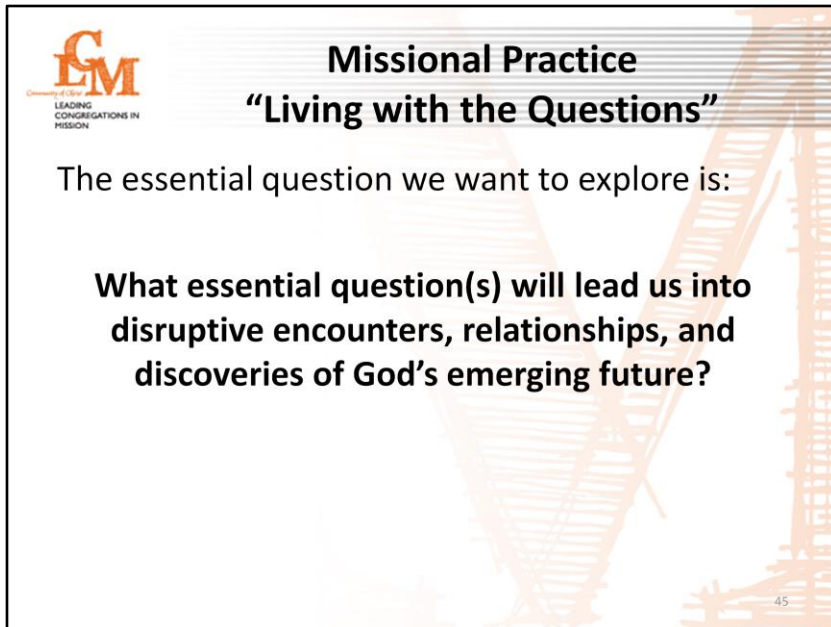
**Break Time be back at 2:30pm**








Encourage participants to sit with any table of their choosing.



 **Missional Practice**  
**“Living with the Questions”**

The essential question we want to explore is:

**What essential question(s) will lead us into disruptive encounters, relationships, and discoveries of God’s emerging future?**

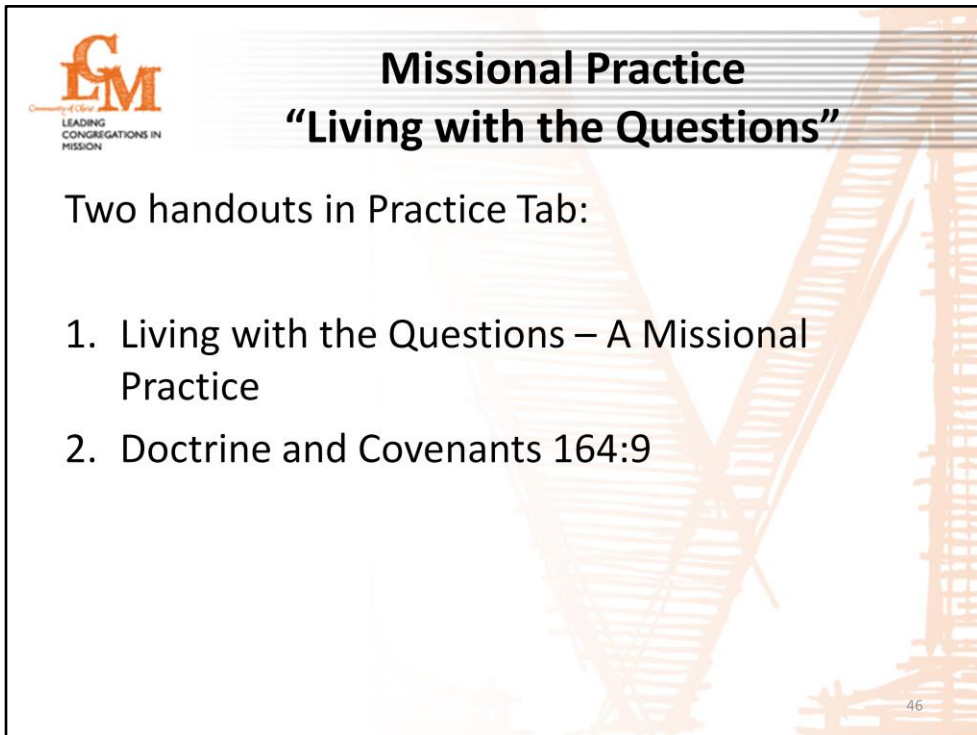
45

**The essential question we want to explore is:**

**What essential question(s) will lead us into disruptive encounters, relationships, and discoveries of God’s emerging future?**

**Welcome participants and share the following comments: (5 Minutes)**

- You may recall from Retreat 2 we discussed the importance of asking good questions, what we called “essential questions”. Asking good questions is actually more important than being quick with the answers.
- Why? Because our focus on answers often leads to a false sense that we have already identified the essential or important questions that need to be answered in order to move us forward in mission. Often this is not the case.
- This is why Jesus did not feel compelled to provide answers when asked a question. He often responded with questions that not only probed beneath the surface but disturbed and even angered some.
- In this session we will briefly explore a new missional practice entitled – Living with the Questions. It expands on our exploration of essential questions in Retreat 2 by considering how we can practice identifying and living with prophetic questions.
- Like all missional practices this too takes practice. Learning to discern and discover the essential questions (i.e. prophetic questions) is part spiritual practice and part skill.



**Missional Practice**  
**“Living with the Questions”**

Two handouts in Practice Tab:

1. Living with the Questions – A Missional Practice
2. Doctrine and Covenants 164:9

46

**Introduce “Living with the Questions – A Missional Practice:” (5 Minutes)**

- Refer participants to two handouts “Living with the Questions – A Missional Practice” in the Practice Tab on pages 47-49 and “Doctrine and Covenants 164:9” on page 49.
- Provide an introduction and overview of the missional practice.



## Doctrine and Covenants 164:9a,b,c

- 9 a. Beloved children of the Restoration, your continuing faith adventure with God has been divinely-led, eventful, challenging, and sometimes surprising to you. By the grace of God, you are poised to fulfill God's ultimate vision for the church.
- b. When your willingness to live in sacred community as Christ's new creation exceeds your natural fear of spiritual and relational transformation, you will become who you are called to be. The rise of Zion the beautiful, the peaceful reign of Christ, awaits your wholehearted response to the call to make and steadfastly hold to God's covenant of peace in Jesus Christ.
- c. This covenant entails sacramental living that respects and reveals God's presence and reconciling activity in creation. It requires whole-life stewardship dedicated to expanding the church's restoring ministries, especially those devoted to asserting the worth of persons, protecting the sacredness of creation, and relieving physical and spiritual suffering.
- d. If you truly would be Community of Christ, then embody and live the concerns and passion of Christ.

47

### Facilitate step 2 of "Living with the Questions – A Missional Practice:" (20 Minutes)

- Read for the groups Doctrine and Covenants 164:9a, b, c providing moments for quiet reflection after each verse.
- Ask each group to go to step 2 in the missional practice for examples and ask each group to identify at least one prophetic question by use of this question:

*What is the prophetic question that emerges for you in this text?*

## Missional Practice “Living with the Questions”

What is the prophetic question that emerges for you in this text?



48

Read question again and leave on screen.

What is the prophetic question that emerges for you in this text?

Remember, a prophetic question over time leads to new insights and unsettledness about the present reality and God’s alternative future.”

Notes to facilitator:

Acknowledge to the groups that they will likely not agree on one question. Like Dwelling in the Word, this is part of the value of the practice. Through our questions we have opportunity to probe into the central meaning of this text and learn from one another.

- Break time be back at 3:30pm



## ***CULTIVATING A CULTURE OF PROPHETIC IMAGINATION***



**Encourage participants to sit with any table of their choosing.**



## Cultivating a Culture of Prophetic Imagination

The essential  
question we want to  
explore is:

How do we create an  
environment that is  
open to God's  
disruptive vision for  
our lives, congregation,  
and neighborhoods?



51

The essential question we want to explore is:

How do we create an environment that is open to God's disruptive  
vision for our lives, congregation, and neighborhoods?

Welcome and share key introductory points ( 5 – 7 minutes)

- In our last session we introduced the concept of prophetic imagination. This idea is not new to us. It is deeply rooted in our movement and continuing journey to become a prophetic people. We are called to be a disturbed people – disturbed with physical and spiritual suffering and the possibilities for healing and new life in Christ in community!
- As leaders we have significant influence over the type of environment or culture we intentionally seek to create in our congregations.
- How we encourage and ask questions, create safe space for exploration, and model leadership as a willingness to be led will help create a favorable environment for two key outcomes:
- **We** (the **emphasis on “we”**) will learn to identify essential (i.e. prophetic) questions that we are being called to discern and respond to over time.
- We will learn to develop deeper levels of trust that foster a willingness to risk sharing new insights with one another.
- It is the PLT's role to intentionally “plan” for disruption – that is to focus more on searching for the deeper and more provocative questions than to propose simple programmatic questions that would lead us in the same direction we have been going in the past.
- This session expands our introduction to prophetic imagination and begins to envision what it looks like to live this out as disciples and congregations.

## Cultivating a Culture of Prophetic Imagination

Becoming “missional” is about a willingness to follow the disruptive promptings of the Holy Spirit that cause us to see with new eyes people, situations, and relationships in need of the healing and restoring power of the gospel.



52

**Make the following points before showing segment 1: (1Minute)**

- A foundational principle of LCM is “Mission is Disruptive”. **Refer to handout (LCM Overview Brochure – 1st Page)**
- Becoming “missional” is about a willingness to follow the disruptive promptings of the Holy Spirit that cause us to see with new eyes people, situations, and relationships in need of the healing and restoring power of the gospel.

## Cultivating a Culture of Prophetic Imagination

Introduction and Segment 1 - “Introduction to  
Prophetic imagination”



53

**Introduce and show Segment 1 “Introduction to Prophetic imagination” of the  
“Cultivating a Culture of Prophetic Imagination” Video: (7 Minutes)**

- Announce that the video gives an introduction to Prophetic Imagination
- Show segment one of the video. (6:49 Minutes)
- Pause video when prompted to do so on the screen.



## Table Group Discussion

Why is prophetic imagination essential in order to “fully embody and live the concerns and passion of Christ” today

164:9d. If you truly would be Community of Christ, then embody and live the concerns and passion of Christ.

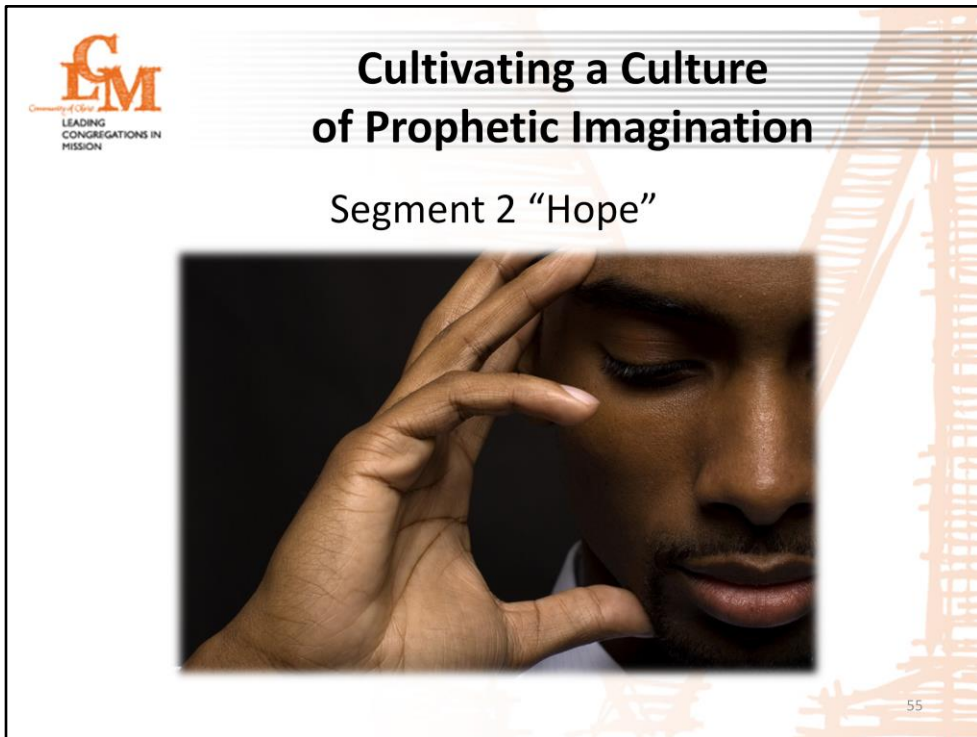


54

**Ask retreat participants to respond to the following question in table groups with a few moments for large group responses: (15 minutes)**

Why is prophetic imagination essential in order to “fully embody and live the concerns and passion of Christ” today (Doctrine and Covenants 164:9d)?

Note to facilitators: provide 5 of the 15 minutes for a few tables to share their responses to the question with the large group.



**Introduce and show Segment 2 “Hope” in the “Cultivating a Culture of Prophetic Imagination” Video: (4 Minutes)**

- Start Video and show segment 2 of the video. (3.87 Minutes)
- Pause video when prompted to do so on the screen.

**In large group ask for a few individuals to share how hope has been meaningful in their discipleship journey. (5-7 minutes)**

## Table Group Discussion

What is one tangible action we could take as a PLT to increase hope in our congregation?



56

**Provide table discussion for reflection on the following question: (5-7 Minutes)**

What is one tangible action we could take as a PLT to increase hope in our congregation?



**Introduce and show Segment 3 “Increasing Our Capacity for Prophetic Imagination” in the “Cultivating a Culture of Prophetic Imagination” Video: (10 Minutes)**

- Start Video and show segment 3 of the video. (9.80 Minutes)
- Pause video when prompted to do so on the screen.





## Practicing Prophetic Imagination . . .

- is a dynamic process... to increase our capacity or space to imagine.
- reorients our attention away from ourselves to God's prophetic work in our neighborhoods.

*When we allow these things to happen,  
the questions we ask begin to change  
in response to what we are experiencing.*

58

**Share the following points:** (Less than a minute for this and next slide)

- **Practicing prophetic imagination is a dynamic process. It is about increasing our capacity or space to imagine. It comes from reorienting our attention away from ourselves to God's prophetic work in our neighborhoods. When we allow these things to happen the questions we ask begin to change in response to what we are experiencing.**
- We cannot fully discover God's future in isolated spaces of worship. We are called to be fully present with God and learn along side the Holy Spirit as we are lead into relationships with others.



## Practicing Prophetic Imagination

### Seven Suggestions for Cultivating Prophetic Imagination

Discuss and develop a congregational activity or missional practice to implement the specific suggestion assigned to your table group.

59

**Refer participants “Practicing Prophetic Imagination in Community” in the Handouts Tab on pages 76-79.**

#### **Share these points:**

- Utilizing segment 3 “Increasing Our Capacity for Prophetic Imagination” and the handout “Practicing Prophetic Imagination in Community” we will now explore some practical ways to cultivate a culture of prophetic imagination.
- Ask participants to look at “7 suggestions for cultivating prophetic imagination” in the handout and explain that these 7 suggestions will now be used a table discussion.

## Practicing Prophetic Imagination . . .

is about a willingness to give up some CONTROL.

It is to recognize that it is not so much for us to  
cast a vision as it is to DISCOVER TOGETHER with  
God's help a shared vision.

60

**Facilitate table discussion and explain the following steps for “7 suggestions for cultivating prophetic imagination:” (20 Minutes)**

- Assign each table group one of the 7 suggestions for cultivating prophetic imagination in the handout “Practicing Prophetic Imagination in Community.”
- Ask the table groups to discuss their assigned suggestion in terms of opportunities and challenges in congregational life.
- Ask the table groups to develop a congregational activity **or** missional practice to implement the specific suggestion discussed. **(Remind the group of the difference between an activity and practice. An activity is something we typically develop as a one-time experience. A missional practice requires ongoing commitment to an action that leads us into relationship with God and others.)**
- Ask for a few tables to share their activity or practice with the large group.



## Practicing Prophetic Imagination Being Led by the Holy Spirit

If we want to live into God's future **we must allow God's Spirit to lead.**

As leaders we must ask this difficult question – **to what extent have we allowed our best thinking, logic, and plans to obscure or totally hide what the Spirit is seeking to reveal right in front of us?**

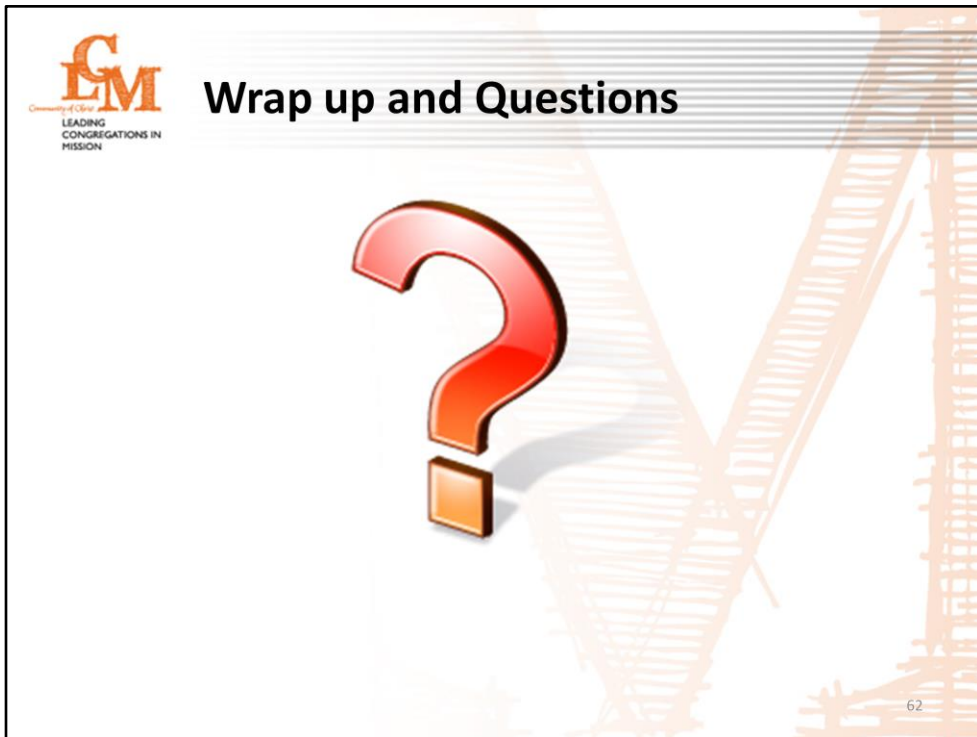
61

Please read quotes on screen:

If we want to live into God's future **we must allow God's Spirit to lead.**

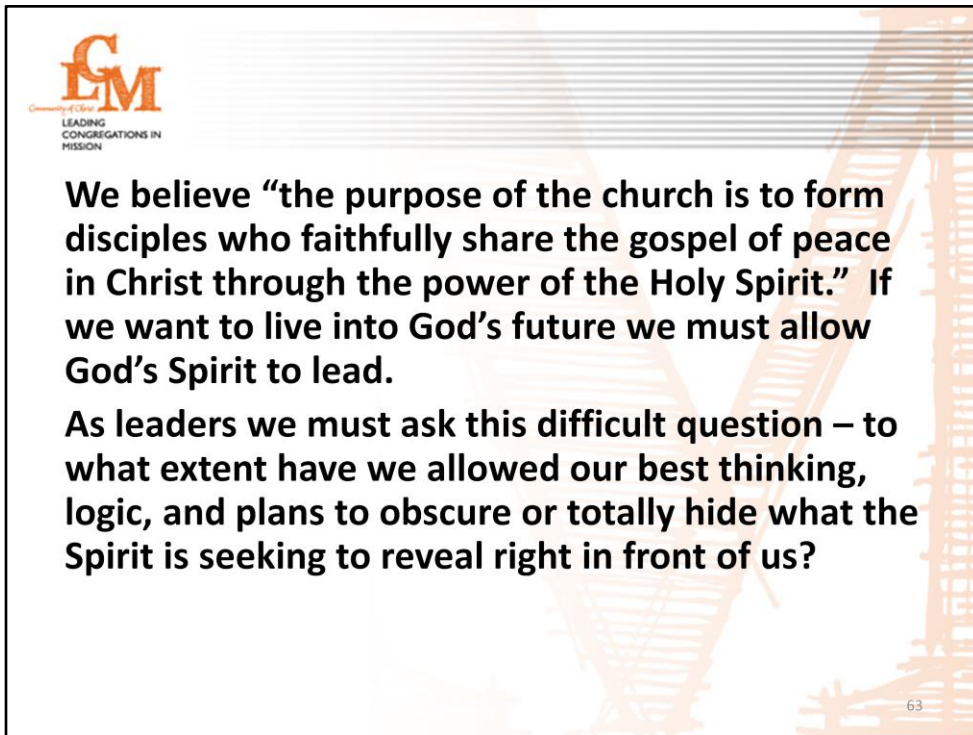
As leaders we must ask this difficult question – **to what extent have we allowed our best thinking, logic, and plans to obscure or totally hide what the Spirit is seeking to reveal right in front of us?**

**Make the following announcement:** Tomorrow, in the session "Next Steps," you will be given an assignment to present in your home congregations segment 4 "Practical Ideas for Living Prophetically" of the video "Cultivating a Culture of Prophetic Imagination." The purpose of using this segment of the video is for engaging your congregation to share with you the cultivating of a climate for prophetic imagination.



**Present the following points:** (10 Minutes for this and next slide.)

- We want to be in control. It is natural to want to plan and predict with some level of certainty certain outcomes based on certain actions.
- In this session we discussed how openness to encountering God and our neighbors will most likely lead to disruption or at times a feeling of being out of control. **(Note to Facilitator: Consider sharing a testimony that would help reinforce this understanding)**
- Practicing or becoming prophetic is about a willingness to give up some control. It is to recognize that it is not so much for us to cast a vision as it is to discover together with God's help a shared vision.
- **Make the following announcement:** Tomorrow, in the session "Next Steps," you will be given an assignment to present in your home congregations segment 4 "Practical Ideas for Living Prophetically" of the video "Cultivating a Culture of Prophetic Imagination." The purpose of using this segment of the video is for engaging your congregation to share with you the cultivating of a climate for prophetic imagination.



Let’s remember a statement and essential question we shared at our first retreat:

**We believe “the purpose of the church is to form disciples who faithfully share the gospel of peace in Christ through the power of the Holy Spirit.” If we want to live into God’s future we must allow God’s Spirit to lead. As leaders we must ask this difficult question – to what extent have we allowed our best thinking, logic, and plans to obscure or totally hide what the Spirit is seeking to reveal right in front of us?**

**Provide Moments for reflection, questions and prayer:**

- Ask large group to reflect on the above statement and question for a few moments.
- If time permits, ask for any questions or comments.
- Ask one or two individuals (depending on time) to end the session with prayer that we might have the courage to let the Spirit lead.



## Dinner and Fellowship

- Please be back at 7:00pm







**Encourage participants to sit with their PLT.**

**Welcome and introduce the “Sock Money Exercise” as a fun team building activity.**

**Announce the “Sock Monkey Exercise” can be found in the Handout Tab on page 85.**

Supplies for the sock monkey will be at a central table, please send someone up to gather supplies to create a PLT theme Sock Monkey

**Summary:** The Sock Monkey exercise is intended as a team building exercise that will engage participants on a tactile level and help the group develop a common memory. Additionally, the sock monkey exercise gives participants time to process other things that may have happened throughout the week (or other time period). Finally, sock monkeys are awesome and this is a fun activity that builds community.

**Process—** Each group will complete the following:

- Select a sock monkey
- Create and accessorize your sock monkey to represent your PLT and congregation
- Create a story about your sock monkey and how each part represents each member of your PLT and congregation.
- Video tape your team and sock monkey explaining its story.
- Show your video to the whole group
- Take your sock monkey back to your congregation and love it.

\*Note: Some groups have chosen to do these steps by consensus.

**MATERIALS:**

1. Pre-made sock monkey
2. Felt & fabric... for accessories
3. Fabric Glue or hot glue
4. Needle and thread
5. Scissors
6. Video camera (Please line up ahead of time)



## Snacks and Fellowship/Game time



Breakfast is at 7:30am, first session 8:30am

66

Remind everyone of breakfast at 7:30am and our first session starts at 8:30am



**Please have music playing as everyone gathers.**

**Ask participants to sit with their PLT.**



## Basic Approaches for Leading In a Time of Transition

The Essential Question we want to explore is:

**What are some basic approaches to proactively and at times reactively address the inevitable stress, sense of loss, and even conflict that can accompany change?**

68

**Welcome and introduce - Basic Approaches for Leading in a Time of Transition: (5 Minutes) (Slides 68-72)**

The Essential Question we want to explore is:

**What are some basic approaches to proactively and at times reactively address the inevitable stress, sense of loss, and even conflict that can accompany change?**

## Living in “Transition”

Is about how we orient and reorient ourselves to a changing set of circumstances.

Affects how we think, feel and behave towards the change we are experiencing.



69

### Makes the following points about transitions:

- Living in “Transition” is about how we orient and reorient ourselves to a changing set of circumstances or an emerging paradigm. It is like hiking in the woods and approaching a clearing we think we recognize but then realize is not familiar at all. We have to step back, try to orient ourselves to unfamiliar surroundings, and navigate in unfamiliar territory.
- When we are in transition we are navigating new terrain. It is unsettling and disruptive.
- There is no map. We must rely on trusted navigational tools – the missional practices which anchor us in our relationships with God and one another as we journey together.

## Living in “Transition” Requires safe Space

- Critical to understand the significance of the unsettledness and disruption that occurs in transition and to create safe and supportive space to help people process through their feelings and reestablish their bearings.

Transitions affect how we think, feel and behave towards the change we are experiencing.

**It is critical for the PLT to understand the significance of the unsettledness and disruption that occurs in transition and to create safe and supportive space to help people process through their feelings and reestablish their bearings.**





## Living in “Transition” Is Disruptive

When we truly open ourselves to God’s disruptive vision or prophetic imagination we will find ourselves in transition as we struggle to fully understand how we are called into new ways of being, relationships, and ministries that will feel unfamiliar to us.

**When we truly open ourselves to God’s disruptive vision or prophetic imagination we will find ourselves in transition as we struggle to fully understand how we are called into new ways of being, relationships, and ministries that will feel unfamiliar to us.**

In this session we will discuss a few initial “proactive” and “reactive” approaches to leading through transitions. These are built on our foundational commitment to “the worth of persons” and our deepening understanding of the relational nature of God.



## Leading Mission in a Time of Transition

Remember “mission is relational.” Leading Congregations in Mission is not about driving toward an outcome but intentionally cultivating a supportive shared-journey into God’s emerging future.

We are called as leaders to risk “trusting in the process” of becoming vulnerable to God and one another. We are called to risk seeing one another from a changed perspective (see Doctrine and Covenants 164:5).

72

**Please read:**

**Remember “mission is relational.” Leading Congregations in Mission is not about driving toward an outcome but intentionally cultivating a supportive shared-journey into God’s emerging future.**

**We are called as leaders to risk “trusting in the process” of becoming vulnerable to God and one another. We are called to risk seeing one another from a changed perspective (see Doctrine and Covenants 164:5).**



## Table Discussion

Remember a challenging time of transition in your life or congregation:

- **What were some feelings experienced or behaviors expressed during this time?**
- **Specifically, what would have been most helpful to you personally or your congregation when you experienced this transition?**

73

**Provide table discussion using the following questions: (10 Minutes)**

Remember a challenging time of transition in your life or congregation. What were some feelings experienced or behaviors expressed during this time?

Specifically, what would have been most helpful to you personally or your congregation when you experienced this transition?



## Basic Approaches for Leading in a Time of Transition

Show  
Roundtable Discussion  
Video

Note helpful or challenging  
ideas for your congregation.



74

**Before showing the video:** Ask participants to make a note of ideas in the video most relevant to what is challenging them as they lead the congregation in mission.

**Show video in two segments (a good place to end the 1<sup>st</sup> segment is at 10:34 after Scott says “Absolutely.”) and pose the following question for discussion after viewing each segment: (28 Minutes)**

What ideas in the video discussion did you find most helpful or challenging as you think about leading mission in your congregation?



## Leading in a Time of Transition

### Table Discussion:



What ideas in the video discussion did you find most helpful or challenging as you think about leading mission in your congregation?

75

### Facilitate table discussion on this question:

What ideas in the video discussion did you find most helpful or challenging as you think about leading mission in your congregation?

**Ask the large group to share the ideas or helps provided in the video found most helpful or challenging.**



## Leading in a Time of Transition

Most of us have a natural tendency to withdraw from difficult situations.

We are called to step courageously into difficult situations with compassion, love, and a willingness to recognize we all struggle and need affirmation and support.

76

**Share the following comments:** (2 minute) (Slide 76,77)

- **We have a natural tendency as humans to withdraw from difficult situations.**
- **As leaders we are called to step courageously into difficult situations with compassion, love, and a willingness to recognize at times we all struggle and need some affirmation and support.**

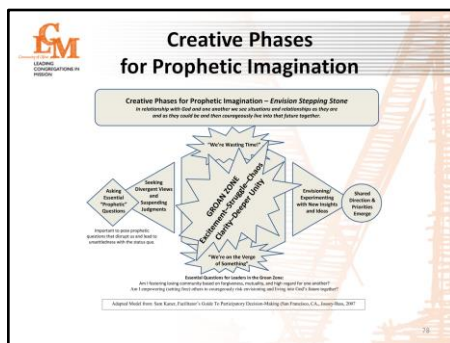
## Leading in a Time of Transition

- How we engage in mission together is as important as the outcomes we achieve.
- How we treat one another is one of our most powerful forms of witness.
- By truly loving one another in the midst of our struggles we signal an alternative future – God’s future - to those around us.



- **How we engage in mission together is as important as the outcomes we achieve.**
- **In fact, how we treat one another is one of our most powerful forms of witness.**
- **By truly loving one another in the midst of our struggles we signal an alternative future – God’s future - to those around us.**





## Introduce and review “Creative Phases for Prophetic Imagination” and the value of “conflict:” (15 Minutes)

Refer participants to Creative Phases for Prophetic Imagination in the Tools Tab on page 103.

Note to facilitator: Keep the slide showing the “Creative Phases for Prophetic Imagination” handout on screen as you share the following points:

- The “Creative Phases for Prophetic Imagination” describes how leading in transition can be challenging and yet lead to a creative and unsettling process of discovering new ways to embody and live the concerns and passion of Christ. In LCM this is the Envision Stepping Stone (Refer participants to “LCM Overview Brochure”)
- Notice the diagram begins with Essential Questions. Note we began each session this weekend with an Essential Question. These questions guided us in the development of these sessions. In our congregations it is important to pose essential questions that will disrupt us to reconsider the status quo as unacceptable. They create excitement, struggle, and chaos all at the same time.
- This diagram helps us as a PLT think about the process of engaging in prophetic imagination or becoming a prophetic people. In many congregations the difficult prophetic questions never get asked for the very reason that they are disruptive.
- In order for individuals to feel safe to raise essential (i.e. prophetic) questions we must first establish safe space. In LCM and the roundtable discussion video we heard ideas for how to create safe space. As a PLT you cannot dismiss or short-cut this community building step or the essential questions will never get asked.
- The Groan Zone is the place where many congregations turn away or withdraw from the process. Note the “physical size of this phase.” It is important to give time and space to this phase. It is difficult work to learn to truly value diversity in one another, to struggle with difficult questions, and especially to not rush prematurely to quick solutions. In this zone it is particularly important to pay attention and be intentional with one another.
- Don’t let someone withdraw quietly or storm away angry. In this zone we learn what it truly means to belong to one another in Christ.
- Use this diagram to think strategically and intentionally about how you will help the congregation move through the process of prophetic imagination.
- There is good news!! When we commit to one another we emerge with new insights and energy to live Christ’s mission in new and meaningful ways together.

## Provide large group opportunity to raise questions and comments. (9 Minutes)

## Creative Phases for Prophetic Imagination

- Purpose is for the PLT to cultivate a supportive and safe space to go deeper and envision God's future. This requires intentional actions by the PLT and the congregation.
- Refer participants to "Conflict in the Congregation Can Be a Uniting Factor" in the Tool Tab on page 104. Encourage use of this for future review and discussion as a PLT.

79

### **Make 2 points: (1 Minute)**

1. The intent of using "Creative Phases for Prophetic Imagination" is for the PLT to cultivate a supportive and safe space to go deeper and envision God's future. This requires intentional actions by the PLT and the congregation.
2. Refer participants to "Conflict in the Congregation Can Be a Uniting Factor" in the Tool Tab on page 104. Encourage use of this for future review and discussion as a PLT.

Break time be back at 10:00am





**Welcome and ask participants to sit with their PLT.**

## Next Steps – Pastor Leadership Team

The Essential Question we want to explore is:

**How do we take what we have explored together and begin to apply it back home?**



82

**Introduce the essential question: (1 Minute)**

The Essential Question we want to explore is:

**How do we take what we have explored together and apply it back home?**



## PLT Next Steps - From Retreat #1

- **Keep asking:** How is our ongoing encounter with God and one another shaping (i.e. changing) how we discern and lead mission together?
- **Meets monthly** to do 3 key activities: *Share in Missional Practice, Discuss Essential Questions, and Discuss Next Steps.*
- **Commits to** and **invites** the congregation to the three shared-practices of Dwelling in the Word, Mission Prayer, and Sharing in the Round.

83

Refer participants to “Next Steps – Pastor Leadership Team” in the Next Steps Tab on page 24.

Ask them to follow along as you share these points : (29 Minutes)

**Note to facilitators:** As you share the following points pause to give time and opportunity for questions or comments from the large group.

- Let’s look at the chart from Retreat #1:
  - Remember the importance to keep asking this question: How is our ongoing encounter with God and one another shaping (i.e. changing) how we discern and lead mission together?
  - **Expectation:** The Pastor Leadership Team commits to meet to engage in three key activities: Share in Missional Practice, Discuss Essential Questions, and Discuss Next Steps
  - **Expectation:** The PLT commits to and invites the congregation to the three shared-practices of Dwelling in the Word, Mission Prayer, and Sharing in the Round.



## PLT Next Steps - From Retreat #2

### ***Discovering Your Context***

- Discovering the stories of one another in your congregation and the stories yet to be heard in your neighborhoods.

### ***Deepening Your Worship***

- Infusing worship with missional intent by utilizing “Planning for Encounter in Worship” and “Worship as Community Missional Practice”.

84

From Retreat #2:

- Think about how you can begin to discover the stories of one another in your congregation and the stories yet to be heard in your neighborhoods. Go to Retreat 3 resources for activities and practices.
- **Expectation:** Consider how to infuse worship with missional intent by utilizing “Planning for Encounter in Worship” and “Worship as Community Missional Practice”.





## Next Steps - From Retreat #3

- Review video *Practical Ideas for Living Prophetically* and handout *Practicing Prophetic Imagination in Community*.
- Discuss practical ways to foster an environment supportive and open to God's future.
- Experiment with *Living with the Questions* missional practice and consider inviting your congregation to join you in this practice.

85

From Retreat #3:

- **Expectation:** Review “Practical Ideas for Living Prophetically” and handout “Practicing Prophetic Imagination in Community.” Discuss one or two ways the PLT can help foster an environment that is supportive and open to God's future.
- **Expectation:** Experiment with “Living with the Questions” missional practice and consider inviting your congregation to join you in this practice.

## Next Steps - From Retreat #3 (Continued)

- Review, “Creative Phases for Prophetic Imagination.” Consider one or two action steps to foster safe space and a willingness to risk new ideas.
- For Retreat 4 – Read *Christianity After Religion* by Diana Butler Bass

Review as a PLT and then with congregation, “Creative Phases for Prophetic Imagination”. Consider one or two action steps to foster safe space and a willingness to risk new ideas.

**Expectation:** For Retreat 4 – Read *Christianity After Religion* by Diana Butler Bass Remember to use the LCM Overview Brochure. This provides a concise summary of the Foundational Principles, our LCM Compass and the “Stepping Stones for Discernment and Planning.” The one page insert provides a guide for the PLT meeting flow and for constructing and asking “essential questions” for when the PLT meets.



## Next Steps - From Retreat #3 (Continued)

Remember to use the  
**LCM Overview Brochure:**

- Reference tool for meetings.
- Use in sharing about LCM with congregation.



Remember to use the LCM Overview Brochure.

- This provides a concise summary of the Foundational Principles, our LCM Compass and the “Stepping Stones for Discernment and Planning.”
- The one page insert provides a guide for the PLT meeting flow and for constructing and asking “essential questions” for when the PLT meets.



**Refer participants to “Pastor Leadership Team Expanded Overview – Key Resources and Potential Action Steps From Retreats 1, 2, & 3” in Next Steps Tab on pages 25-28 and share these points:**

- These key resources and potential action steps are intended to help the PLT discuss and discern appropriate next steps as leaders and with the congregation. Remember, these are suggestions and can be implemented gradually as the PLT determines appropriate. You will likely not utilize all these resources. Like our backpack, we take out what we need as we journey together.
- The PLT is strongly encouraged to always keep these four steps in focus:
  1. **Slow Down**
  2. **Invest in Relationships with One Another and God**
  3. **Commit to Missional Practices and Engage Congregation**
  4. **Discern and Plan for Mission Together as PLT**



**It is not about LCM. It is about your leadership team discerning and leading mission together!**

- **It is your journey.**
- **You determine what will work best with your congregation.**
- **Intentionally plan next steps together.**



89

**Emphasize the following point:**

- **It is your journey.** Although we provide resources and suggested next steps this is your journey. Use what makes sense, modify resources based on needs, and take ownership of the call to discern and lead mission as a team.
- **Provide time for the PLT to identify steps they plan to take: (10 Minutes)**
- Ask each PLT to make a list of steps or ideas for further exploration by asking each member of the PLT to identify one step or idea they would like to explore.

## We are on a Long Journey

- We are on a long journey in the same direction.
- Let's *trust in the journey* and commit to supporting one another.
- Work on creating safe and supportive space for all to share.



### Make these affirmations:

- Remember we are on a long journey in the same direction.
- We are called to trust in the journey and commit to supporting one another as we become a people that embody and live the concerns and passion of Christ in a hurting world.
- Cultivate safe space and invite the congregation to join you on this faith journey.





## Affirmation: The Missional Practices

- Go deeper in our relationships with God, one another, and our neighbors.
- Missional practices awaken us to God's movement and emerging future.
- We open ourselves to new relationships that allow us to *see situations and relationships as they are and as they could be* and then *courageously live into that future together*.

91

Share these affirmations:

- We are called to go deeper in our relationships with God, one another, and our neighbors by committing to missional practices that awaken us to God's movement and emerging future all around us.
- Remember the missional practices help cultivate prophetic imagination.
- When we live out in everyday life the missional practices we open ourselves to new relationships that allow us to see situations and relationships as they are and as they could be and then courageously live into that future together.



## Led by the Holy Spirit?

*To what extent have we allowed our best thinking, logic, and plans to obscure or totally hide what the Spirit is seeking to reveal right in front of us?*



92

We believe “the purpose of the church is to form disciples who faithfully share the gospel of peace in Christ through the power of the Holy Spirit.”  
If we want to live into God’s future we must allow God’s Spirit to lead.

As leaders we must ask this difficult question :

To what extent have we allowed our best thinking, logic, and plans to obscure or totally hide what the Spirit is seeking to reveal right in front of us?

***Lift up your eyes and fix them on  
the place beyond the horizon to  
which you are sent.*** *Doctrine and Covenants 161:1*



Please read slide:

***Lift up your eyes and fix them on the place beyond the horizon to which you are sent.***  
***Doctrine and Covenants 161:1***



**10:45 - 11:00 AM Prepare for Worship**